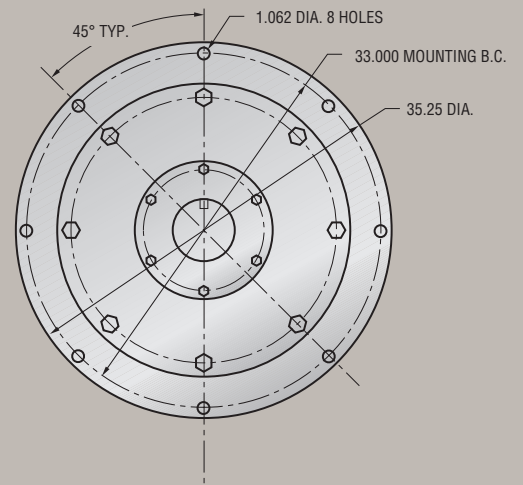
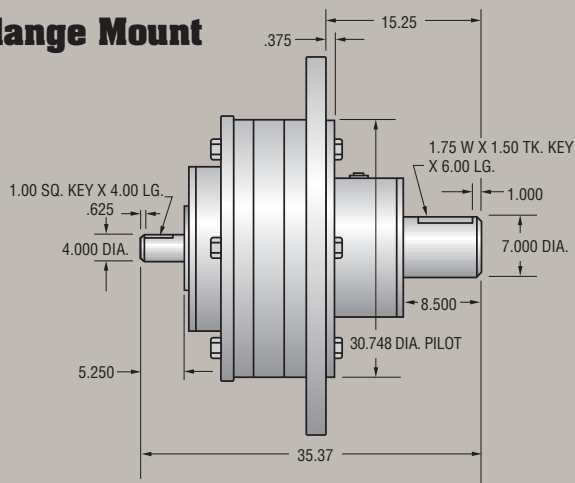


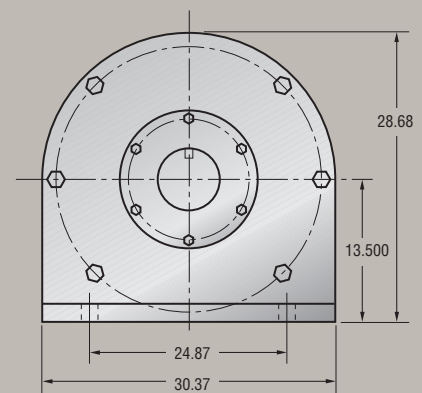
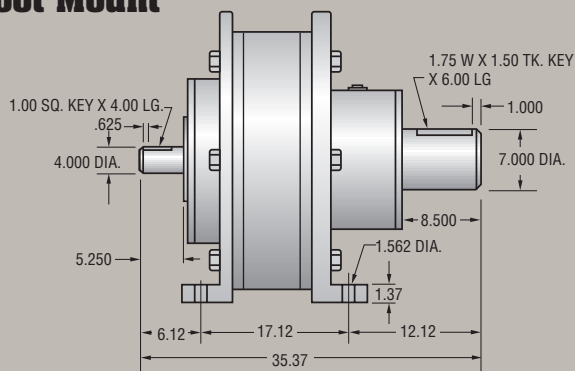
Model 240

Single Reduction Planetary Gear Reducer

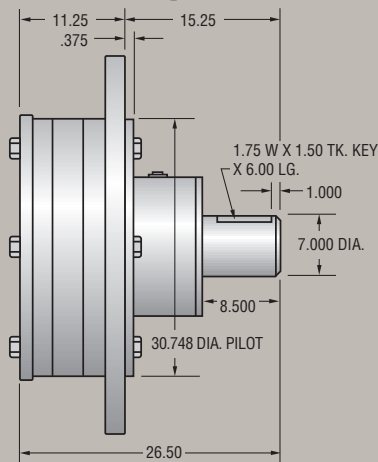
Flange Mount



Foot Mount



Flange or Foot Mount w/SAE or NEMA Input



NEMA Electric Motor Direct Mount

"C" face direct couple of motor to speed reducer. No need for coupling or special motor mounts.

SAE Hydraulic Motor Direct Mount

2 bolt or 4 bolt direct couple of hydraulic motor to speed reducer. No need for coupling or special motor mounts.



Byrne
**Gear Corporation
of America**

- Planetary speed reducers
- High-speed increasers
- Custom design geared products

"The Problem Solver"

Model 240

Single Reduction Planetary Gear Reducer

Planetary Assembly	Ratios	OUTPUT HORSE POWER RATINGS (Adjusted for Thermal Efficiencies)						
		INPUT R.P.M.						
		100	580	720	870	1170	1430	1750
E	3.00	196.19	671.52	781.26	891.92	1097.46	1262.97	1454.74
A	3.50	180.53	617.95	718.93	820.76	1009.91	1162.21	1338.68
B	4.00	182.66	625.22	727.39	830.42	1021.79	1175.89	1354.43
C	4.33	128.15	438.66	510.34	582.62	716.89	825.01	950.27
D	6.00	98.05	335.61	390.45	445.75	548.48	631.20	727.04

Ratings based upon uniform steady and moderate shock loading. See load factor chart for details.

OUTPUT SHAFT RADIAL (overhung) LOAD CAPACITIES (at output r.p.m.)								
R.P.M.	10	20	30	50	100	200	300	500
Radial Capacities (lbs.)	56,000	46,000	40,000	35,000	28,000	27,000	23,000	19,000

OUTPUT SHAFT THRUST LOAD CAPACITIES (at output r.p.m.)								
R.P.M.	10	20	30	50	100	200	300	500
Thrust Capacities (lbs.)	52,374	41,942	37,681	32,319	26,260	21,335	18,889	16,200

OUTPUT SHAFT MAXIMUM CONTINUOUS TORQUE CAPACITY: 403,360 lb./inches

OUTPUT SHAFT INTERMITTENT TORQUE CAPACITY: 806,720 lb./inches

WEIGHT: 1,100 lbs.

RATING SYSTEM: All Ratings Based Upon American Gear Manufacturers' Association Standards

If you use BYRNE GEAR products, you are in good company.
Join the thousands of satisfied customers
that choose the "Problem Solver".

USX - Steel Division
 General Motors
 LTV Steel
 Portland Cement
 U.S. Air Force
 Israeli Air Force
 United Technologies
 3M Company
 U.S. Coast Guard
 Tennessee Valley Authority
 Union Carbide Corp.
 Tritan Corporation
 Armco Steel
 Kuwaiti Oil Company
 Exxon

NASA
 E.I. Dupont
 U.S. Navy
 Fuller Company
 Sikorsky
 Bendix
 Canadian Bearings Co.
 Caterpillar Tractor Co.
 Container Corp. Of America
 Grotnes Metalforming
 Ingersoll Rand Corp.
 R.R. Donnelley & Sons
 The Budd Company
 Ohio State University
 Mead Paper

Martin Marietta
 Rockwell International
 Bethlehem Steel
 Ashland Petroleum
 Republic Steel
 Batelle Memorial Institute
 Scott Paper
 British Petroleum
 FMC Corporation
 Goodyear Tire & Rubber
 Michael Byrne Mfg. Co.
 MacGregor - Navire
 Sandia Laboratories
 National Ctr. for Atmospheric
 Research



Byrne

"The Problem Solver"

Part of The Byrne Group

Copyright © Byrne Gear Corporation of America
 Printed in U.S.A. 697

GEAR CORPORATION OF AMERICA

301 Byrne Gear Drive
 P. O. Box 1789
 Mansfield, Ohio 44901
 Telephone: (419) 522-GEAR(4327)
 Fax: (419) 525-2386

E-mail: byrne@byrnegroup.com

Visit our web site at: www.byrnegroup.com